

# Arctic char fishing in remote and sumptuous surroundings in South Greenland

*Come for a unique fishing adventure and enjoy our gourmet food!*



sheep and ices



at the ends of the earth



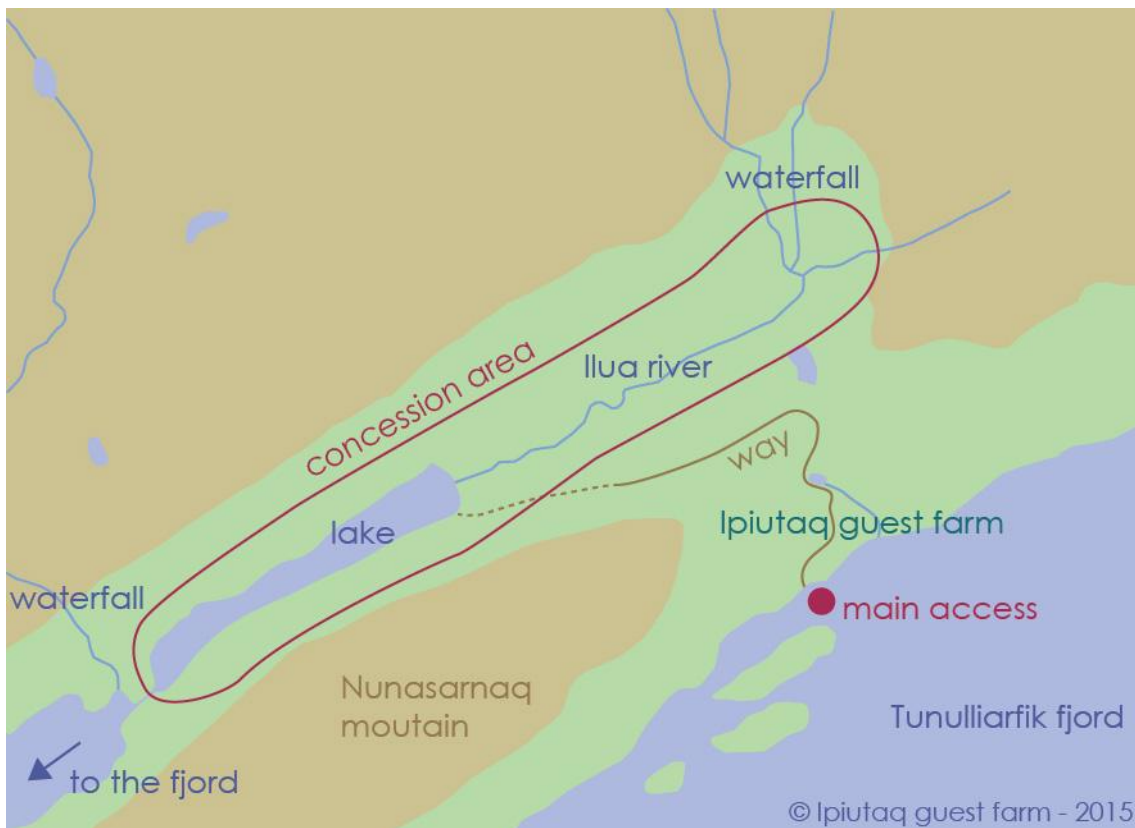
summer at Ipiutaq



view on the neighbour fjord

Situated along the waterway "route" from South Greenland's airport in Narsarsuaq to the main towns of Narsaq and Qaqortoq, **Ipiutaq guest farm's** surroundings offer a large **diversity of landscapes**, from snow-covered mountain peaks and clear streams with waterfalls to rocky beaches and green pastures.

## Ilua river: one of the best places for Arctic char fishing in Greenland



The **clear flowing river Ilua** is located in the neighbouring valley, at a 45 minutes hike.

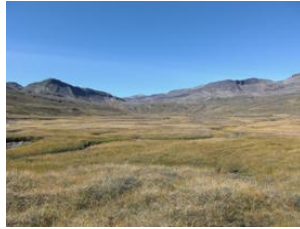
## An “all-round” place for fishing: from the fjord to crystal clear waterfalls

The river meanders through a green and lush valley, in amazing surroundings with high mountains and beautiful views over the lake and the fjord.

The main river is around 3 km and offers an interesting diversity of sections, such as rapid flowing water, deep clear pools or waterfalls and rocky places. From Ipiutaq guest farm, the hike to reach the main part of the river takes around 45 minutes.



from the farm to the river



the valley



the river...



...Ilua

The river flows into a 2,5 km long lake connected to the fjord through a 200 m stretch of river where a lot of fish are swimming up to the lake at high-tides. This stretch of the river flows into the “ilua” – which means “inside” in Greenlandic – the protected part of the fjord, and then to the open fjord.



from the river to the lake



at the end of the lake



clear pool...



...and waterfall

In the lake, the best fishing place is at the mouth of the river, where water flows and fish often rest before swimming upstream.

Up north, it is possible to fish in the main river until the foot of a beautiful and impressive large waterfall where water flows over a huge rocky staircase...



**Season, techniques and licence**



photo: Han Van Vierssen



photo: Han Van Vierssen



photo: Han Van Vierssen



photo: Fons Van Westerloo



photo: Phil Cobham



photo: Thomas Bjerrum

## Season

The Arctic char (Eqaluk in Greenlandic, Omble Arctique ou Omble Chevalier in French and Ørred in Danish) swim up the rivers in July and August. They swim upriver at high tides and there is therefore a constant migration of char, which means excellent conditions for fishing.

The Arctic char is typically fished at the mouths of rivers or at the boundary between rivers and lakes. As a rule, char are found where the concentration of food is greatest, the water is deep enough to cover their dorsal fins and where the water is relatively still. At the end of the period, the best fishing spots will be upriver.

The season for fishing in Ilua is July, August and first part of September. The best period, depending on the years, is from mid-July to mid-August.

## Technique and average size

It is possible to fish with both spin and fly in all sections of the river. Regardless of whether you choose spinner or fly, the Greenland Arctic char are well known for putting up a good fight.

The Arctic char's average in Ilua is around 45 cm up to 60 cm for around 2,4 lb up to 5 lb.

**Notice! In the area of the concession of Ilua river and lake, only barbless fishing hooks are allowed, in order to have a better catch and release fishing.**

## Ilua river is under a fishing concession

From June 2013, the river and lake system Ilua is under a fishing concession from the Government of Greenland.

The conditions for fishing in Ilua are described in the concession regulations that we provide to anglers who are fishing at Ipiutaq guest farm.

For non-residents in Greenland, a fee per person and per day is charged for the rights of fishing in the concession area of Ilua:

- 570 DKK for anglers who are not staying overnight at Ipiutaq guest farm,
- 475 DKK for anglers who are staying overnight at Ipiutaq guest farm

While fishing in the concession area of Ilua, it is not necessary to have a fishing license. Only the fishing rights for the concession are required.

But if you wish to fish in the fjord just down the guesthouse or at the end of the lake, as everywhere in Greenland for non-residents, you will be required to have a personal fishing license, which gives the owner the right to fish with a fishing rod, jig or similar handheld tool in accordance with rules that apply to sports fishing in Greenland.

Validation durations and prices: A (24 hours, 75 DKK), B (one week, 200 DKK), C (one month, 500 DKK). If you buy your license yourself from outside Greenland or Denmark, an international payment fees of 50 DKK has to be added.

Fishing license can both be bought in Greenland (at the local post office in Narsarsuaq) and from your home country prior to your trip, by downloading this document: <http://www.greenland.com/en/media/377898/fishing%20license%20greenland.pdf>.

We can also include it in your fishing vacation package.

### **Other fish in the fjord**

Just down our guesthouse, you can also catch some Greenland cod or Atlantic cod in the fjord. Agathe will be happy to cook them for her "Greenlandic bouillabaisse" or simply oven-steam them with wild herbs and seaweeds. "



Greenlandic bouillabaisse



fish in the kitchen



Arctic char for oven



dinner after a fishing day

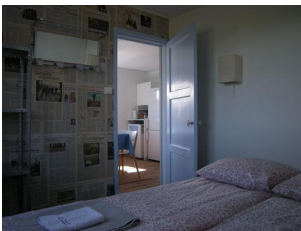
## Warm and personal welcome

We like to welcome our guests in our house. We can speak several languages – Greenlandic, French, English, Danish and Spanish – to tell you stories about Greenland and Ipiutaq guest farm...

### Cozy cottage guesthouse, gourmet food and unforgettable views

You can choose to stay in a guestroom with meals included or you can also decide to rent our cottage guesthouse (up to 6-8 persons).

**Our small double guestroom** is very cozy, with a double bed (bed-linen, bath towels), an original decoration on walls and an amazing view on the fjord and mountain peaks.



guestroom



view from the guestroom



living room



bathroom

**Our cottage guesthouse** near the fjord is renovated and open from the 1st of July 2013. The house can accommodate up to 6/8 persons and is fully equipped: a bedroom with a double bed, a bedroom with 4 beds, a living room with sofa-bed, a kitchen with dining place, a bathroom with 2 showers, and toilets (bed-linen and bath towels included).

**It is also possible to book for a triple or quadruple room** in the guesthouse and choose to be cooking yourself or/and to order meals and food in advance.

### Services and meals with booking

If you do not wish to cook each day, and if you would like to enjoy our French-Greenlandic special cuisine, you can book for **a gourmet dinner** in our home, a **picnic lunch** for your hiking-fishing days, a **“take away potful”** with fish or meat (you just have to heat it up and add yourself the side dish), and a **breakfast** (ingredients ready in the kitchen, you prepare your breakfast when it fits you better).

### Grocery shopping with booking

Ipiutaq is a very isolated place, from where you cannot go shopping. A **list of food products** is available, so you can **“go shopping” in advance** and order supplying with booking of your stay.

## An original gourmet cuisine from traditional products to a French “savoir-faire”



whale skin



fish soup



spicy scones



angelica



prawns



wild sorrel soup



wild dried herbs

The place, open in 2007, is known for its **original French-Greenlandic gourmet cuisine** based on local products. After a wonderful fishing day in the valley, you can **enjoy a nice dinner in our house**. Your starter could be whale skin - called mattak in Greenlandic - served with our angelica-garlic-rosemary pickles, your main course could be a reindeer French “daube”, a stew cooked with Greenlandic plants and spices and you could end your meal with Agathe’s apple-angelica cake.

### Other activities at Ipiutaq guest farm

At Ipiutaq guest farm, you can experience **Greenland’s wilderness and agriculture**, enjoy **home cooked meals** and sample **new food**, enjoy **outdoor activities**, such as, hiking, picking berries or working in the farm, or just relax and take in the scenery in **sumptuous and unusual surroundings**.



harvest time at Ipiutaq



delivery of a tractor



picking berries



sample new food

***“Ipiutaq’s rare combination of excellent gastronomy, comfort and wild greenlandic nature is absolutely unique, highly addictive and completely unforgettable...”***

in “The arctic settlers”, Greenland Today n.1, November 2007